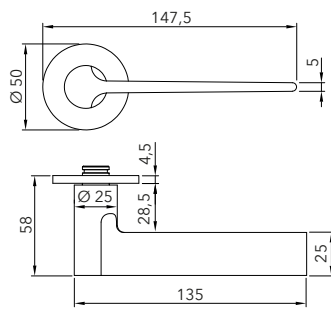


# MANIGLIE per porte **BATTENTI** in **LEGNO** con **SERRATURA MAGNETICA**

## CASSIOPEA | Rotonda

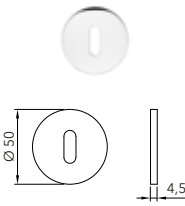


Foro chiave, nottolino o cilindro fatti in cantiere.

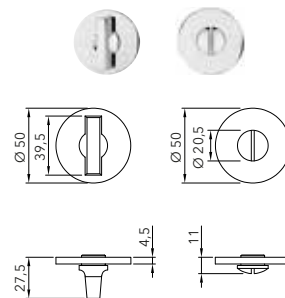
SOLO MANIGLIA



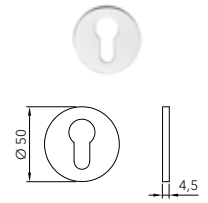
CON FORO CHIAVE



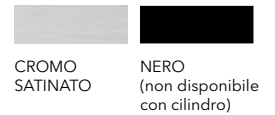
CON NOTTOLINO



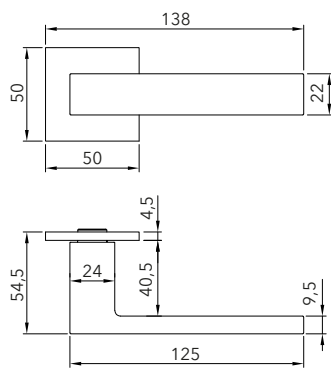
CON CILINDRO  
- non compreso -



FINITURE



## CASSIOPEA | Quadrata

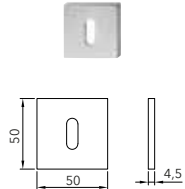


Foro chiave, nottolino o cilindro fatti in cantiere.

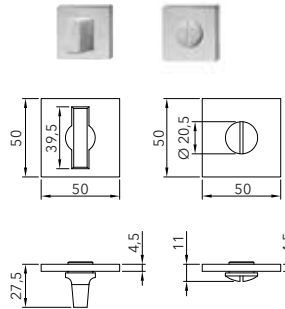
SOLO MANIGLIA



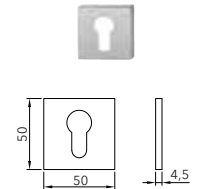
CON FORO CHIAVE



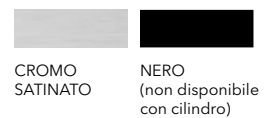
CON NOTTOLINO



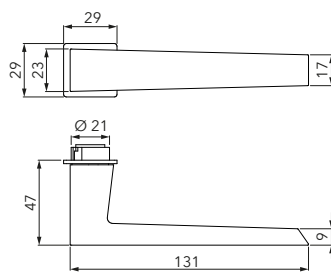
CON CILINDRO  
- non compreso -



FINITURE



## 40+uno | Battente

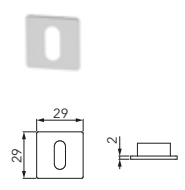


Foro chiave o nottolino fatti in cantiere.

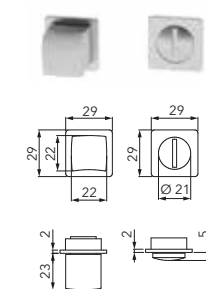
SOLO MANIGLIA



CON FORO CHIAVE



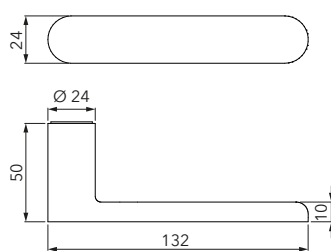
CON NOTTOLINO



FINITURE



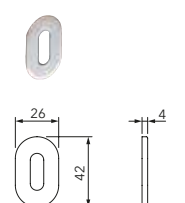
## PURE - Collezione Nuda di Verum Italy



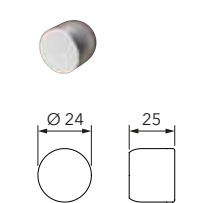
SOLO MANIGLIA



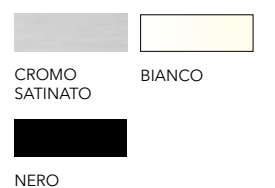
CON FORO CHIAVE



CON NOTTOLINO



FINITURE



NOTE: Misure espresse in millimetri.